



701 industries install guide

Congratulations on your new Spark Trim install Kit

Version 1 24-2-17

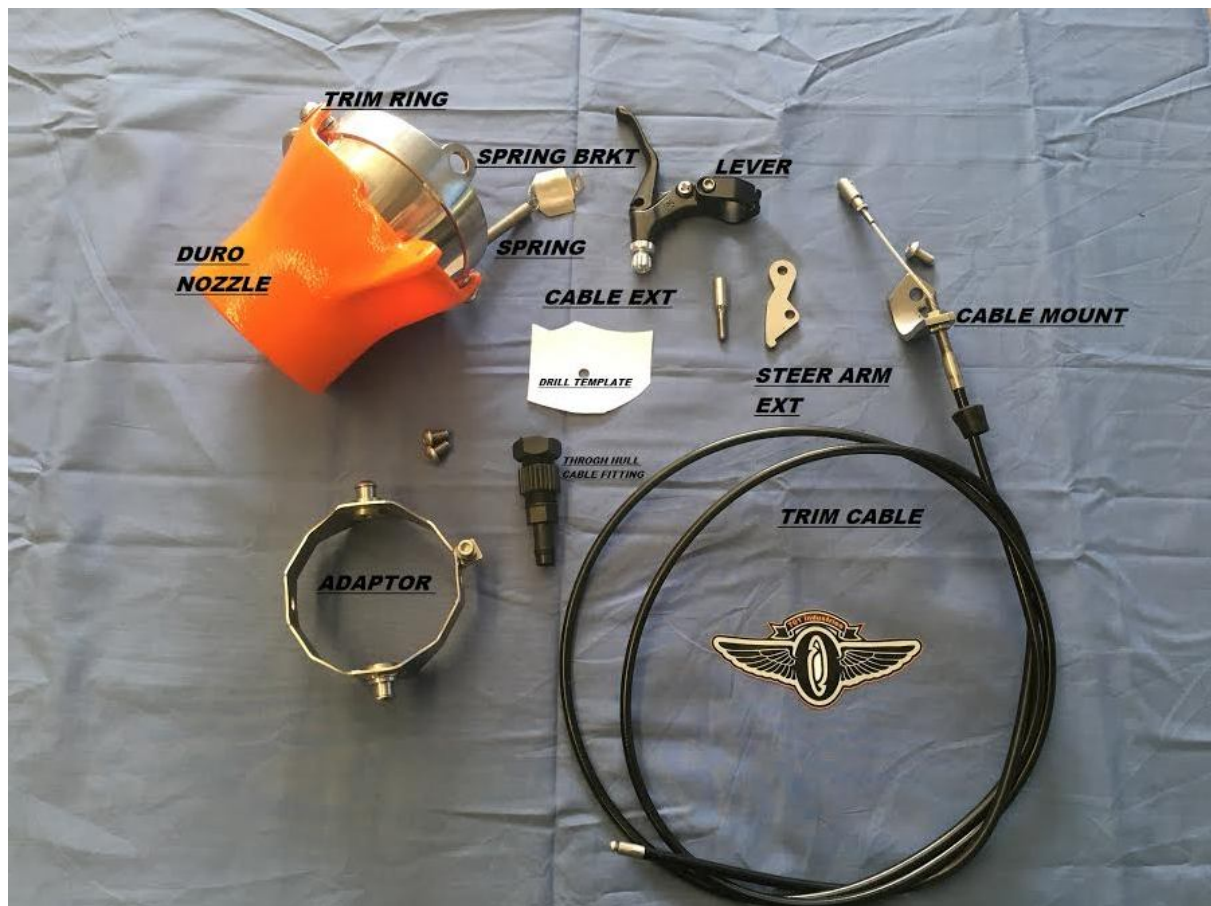
You will be doing tricks before you know it

What you will need for install couple of hours and a friend will be handy

Install Guide will be covered in three sections

- A Pump install
- B Deck install
- C Steering install

Your new Trim kit



Above all components in your kit

Tools needed

30 Torx driver

¼ inch socket set with 10mm 8mm sockets and driver

8mm socket spanner or driver

Metric allen key set

13mm socket and drivers plus extension bar

Drill grinder

40mm hole saw 23mm splade drill

Loctite red

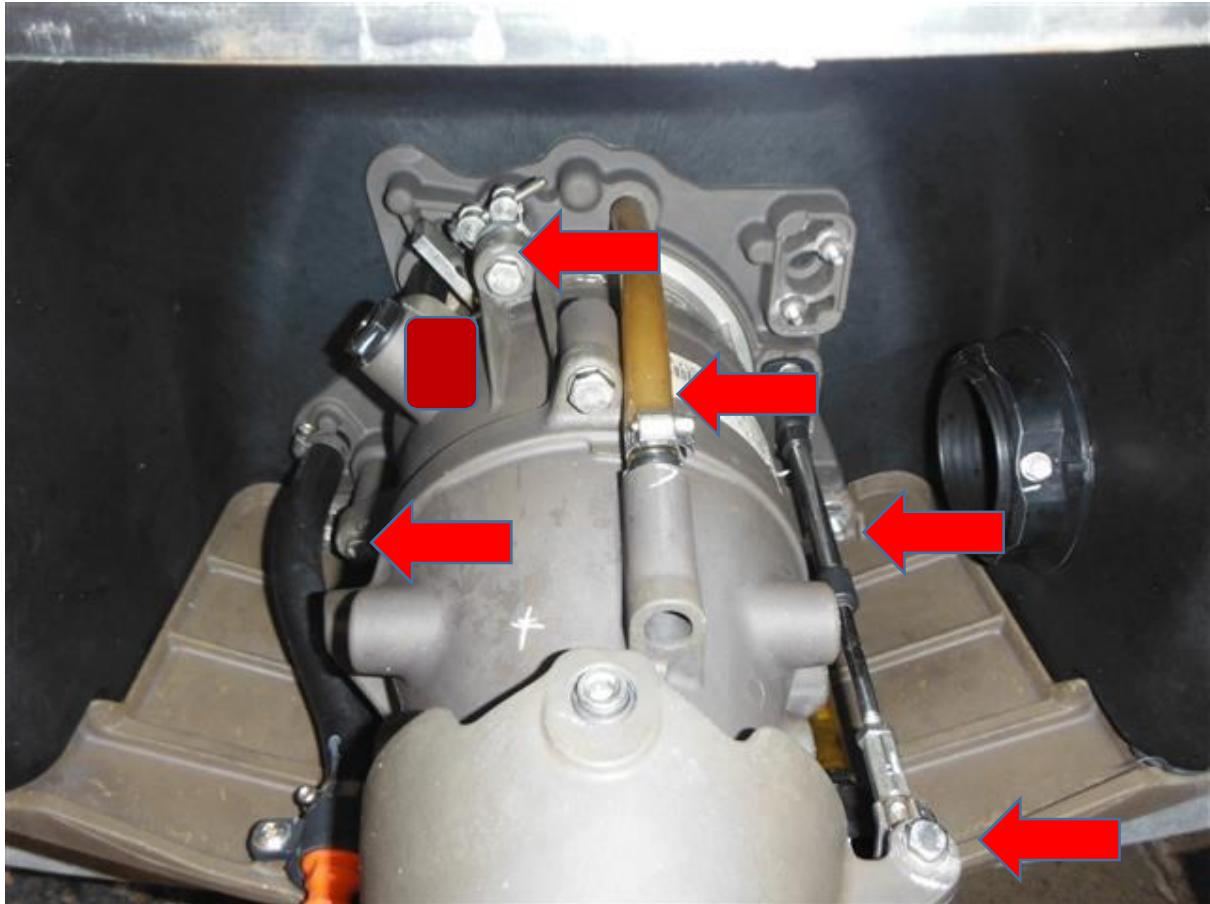
Grease for PTO spline shaft

First you will need to take the deck off to gain access to arears for install.

In install guide performed on a 2016 2up Seadoo spark

Section A Pump Install

To take the pump out Undo the steering arm bolt and the three 13mm bolts in red arrows on the pump housing to remove whole pump assembly by sliding to rear.



Carefully to note the location tabs on the wear ring and the water inlet pipe to refit in same location in red in red square for reinstall.

Pull out the brown tube suction line just a press fit and put back on completion.

Once out put on a table for easy access to work on installing parts.

Remove old steering nozzle two 6mm allan bolts



IMPORTANT measure across the posts to work out amount to be removed
take you time measure twice cut once.

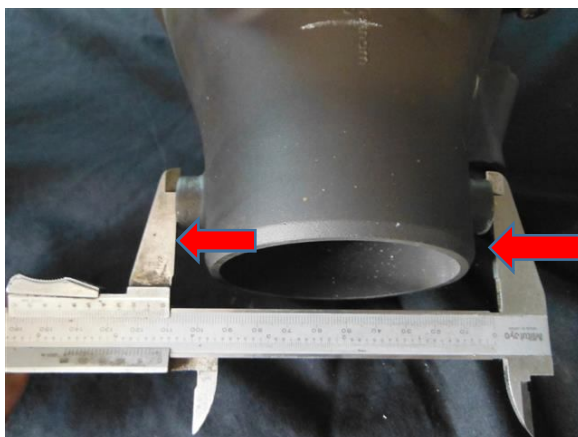
The goal is to make the new measurement 99mm to fit the adaptor plate !!!!

In the photo example using a Vernier we measured 112mm across **SO**

The Math $112 - 99 = 13$ divided by $2 = 6.5\text{mm}$ to be removed from both sides

Mark out and cut less than you can file or sand the post the last part to ensure you keep the posts even and square as possible.

OK now recheck before you cut !!

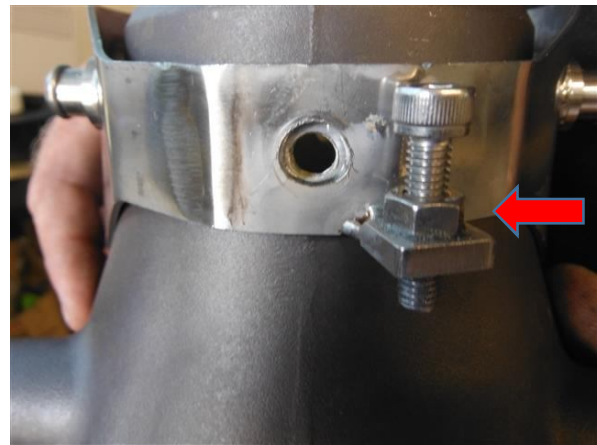




Now fitting of Adaptor plate

Note keep the allan bolt tab to the bottom of pump with red arrow very important otherwise you will have to reassemble it after.

Slide the adaptor plate over the pump and install 2 * 8mm screws with Loctite tighten down hard and evenly.

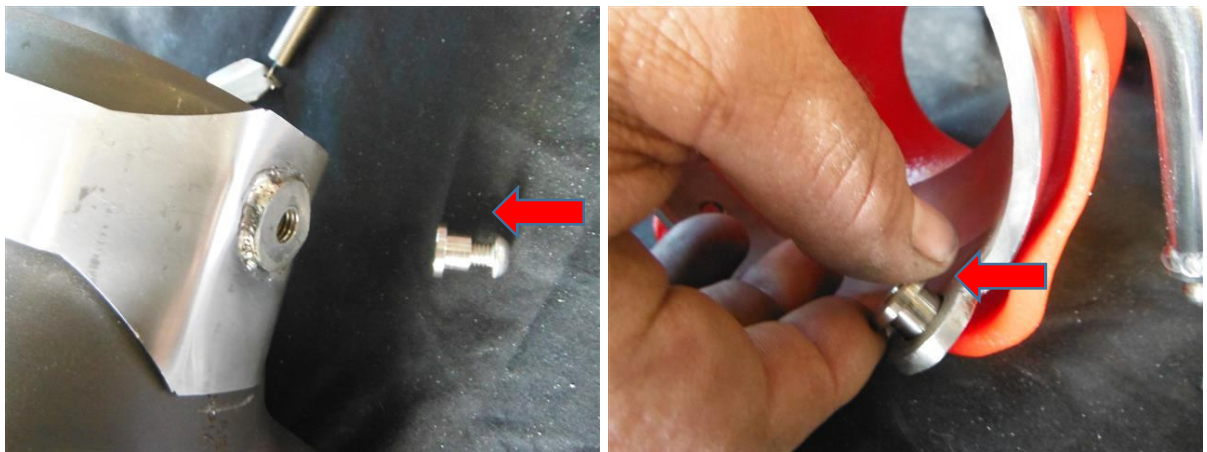


Next fitting quick release trim nozzle kit.

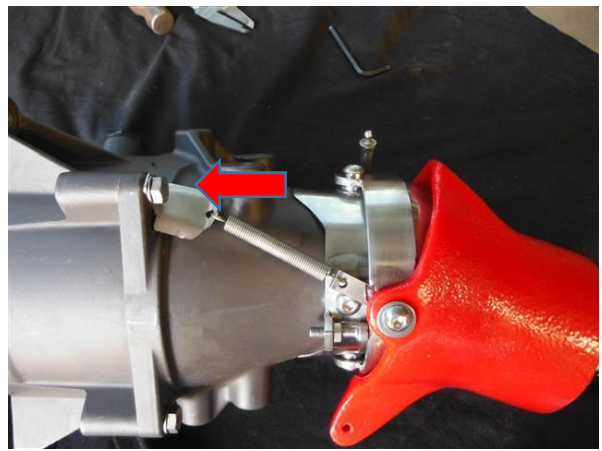
Remove the two lose bolts and bushes from adapter plate and install into trim assembly see photo

Install two bolts and locktite and tighten

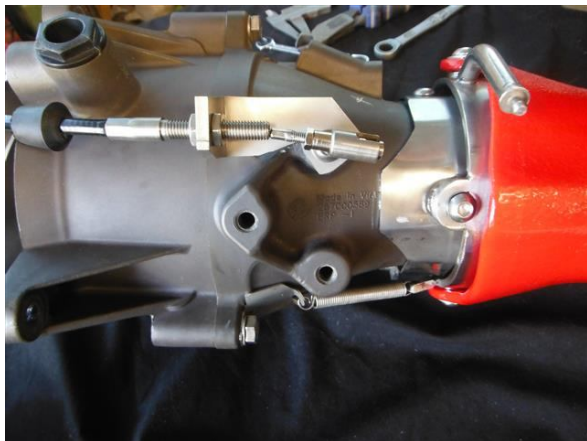
Ensure that the spring assy is at the bottom and the arm is position on top as per photo and once assembled check that all parts move freely



Now fit the return spring as per photo to the bottom left pump bolt just remove bolt and fit bracket.



Install the cable bracket and add the cable assembly and attach arm as per photo below note through the hull fitting seal is per install on cable assy



Remove the ball joint from steering arm and adjusting nut to install the steering extender Loctite thread and reinstall original adjust nut and ball joint as per photo.



Now pump area is complete

SECTION B HULL INSTALL

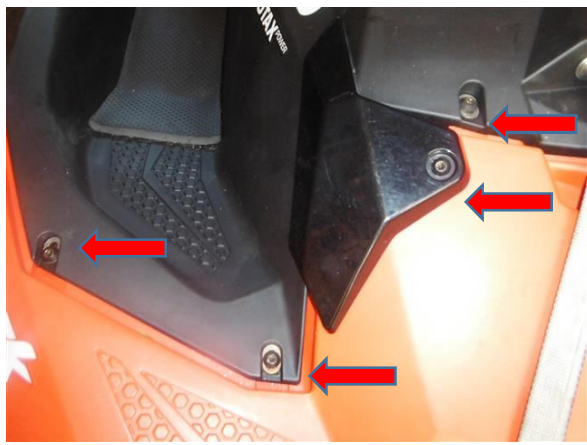
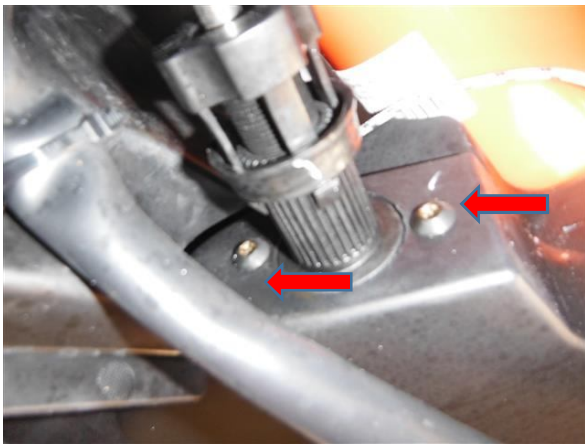
You need to remove the deck to install the through the deck fitting for the cable run up to the handlebars.

You will require a drill and a 23mm spade bit to drill out hole marked out using template supplied

Steps

1. Remove the storage bin if fitted 5 torx bolts remove lid and bin
2. Remove the left hand white side cover and remove bolt from steering arm 8mm
3. Remove the two torx screws from the steering shaft
4. Remove the seat and the three torx screws around the fuel cap
5. Remove the rest of the torx screws from rear and front around and back decks
6. Remove the 5 bolts along sides both NOTE have 10mm lock nut underneath
7. Remove engine cover and disconnect the main connector put back the red tab the push on the black lock and pull apart
8. NOTE torque taken to undo screws and tighten the same and don't over tighten screws as to avoid stripping

You now should be able to take the top off Overview of screws to be removed below



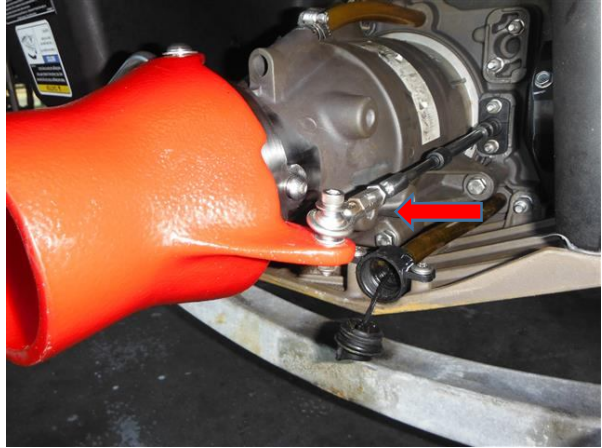
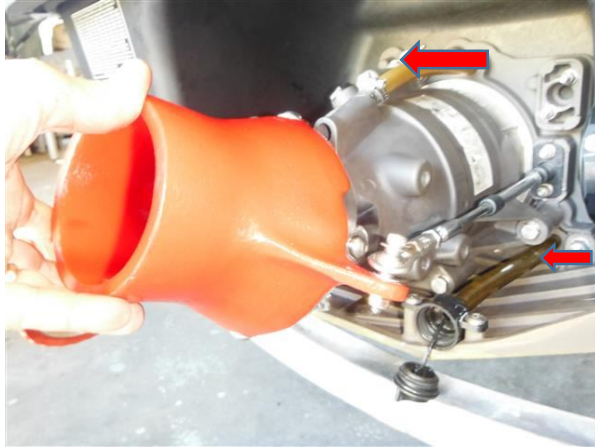
Install through the hull fitting **NOTE** the seal for the fitting is preinstall on cable already



Do up by hand as tight as possible by hand only

Reinstall the pump assembly with new trim kit install above slide the flex cable through the hull fitting it to the hull align the pump assy ensure too align the wear ring tab on the post not the water inlet and reinsert plastic bilge line. Then install through seal on fitting.

Loctite the bolts and tighten down evenly and refit steering arm to top of nozzle.



NOTE

Run the flex cable through the hull as straight as possible away from any moving parts and exhaust areas.

With top of you need to drill a 8mm hole near the steering cable where it comes through underneath see photo for position drill from under hull



Feed cable through hull final position and feed through hole and reinstall top desk all bolts and screws ensure you crush main connector when putting back on.

Section C Steering install

Remove the handlebar cover and front centre cover and left hand stop switch cover

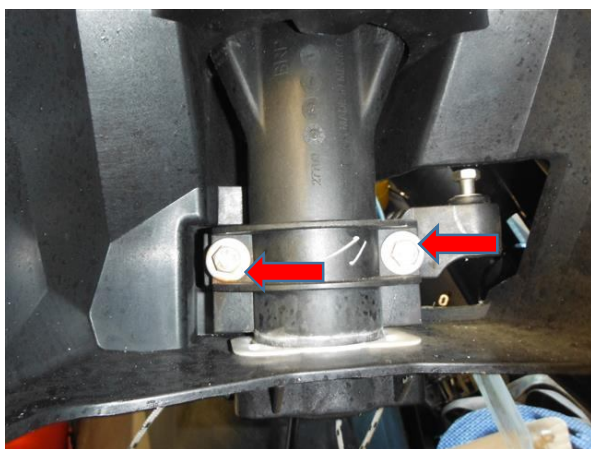
Remove the handlebar cover by using a flat blade screwdriver to disengage tab to remove cover

Also remove the front screw from centre cover marked in red and push on lock tab at the top and slide forward to gain access to steering area



Remove the two 10mm bolts from steering arm then up handlebars to remove steering arm bracket.

Use original bolt for steering arm for new steering arm extender

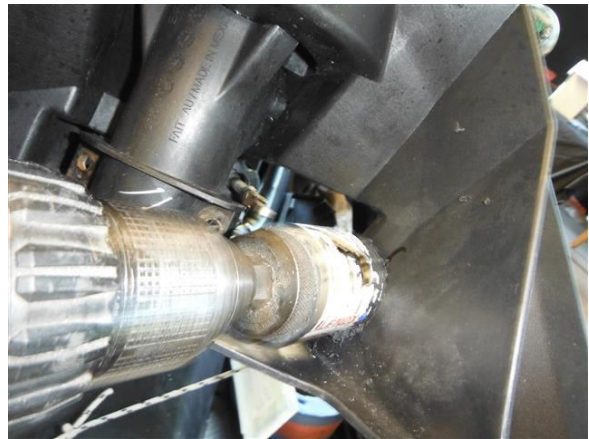
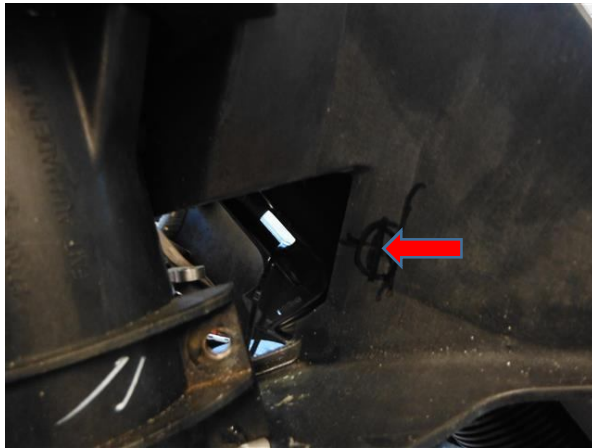


With arm removed fit the new arm extender just original bolt for plastic section and new bolt supplied for arm extender



Now you need to cut out a clearance hole for new arm extender to go through see photo

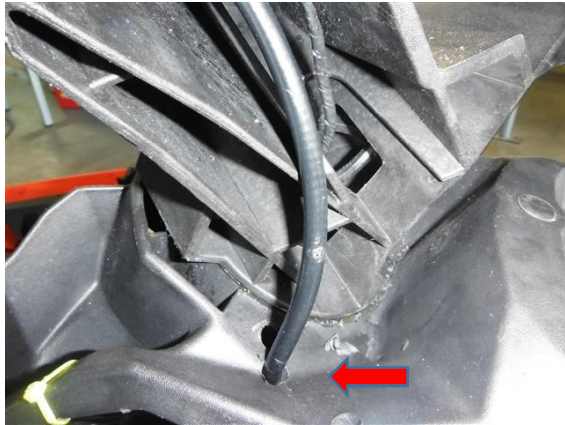
Hard to see but where the X is marked there is a 15mm flat section mark in centre and level with new arm travel use a 40mm hole saw to cut out required hole for clearance.



You can use air grinder or a file and some sandpaper to clean up rough edges and extra clearance if needed.

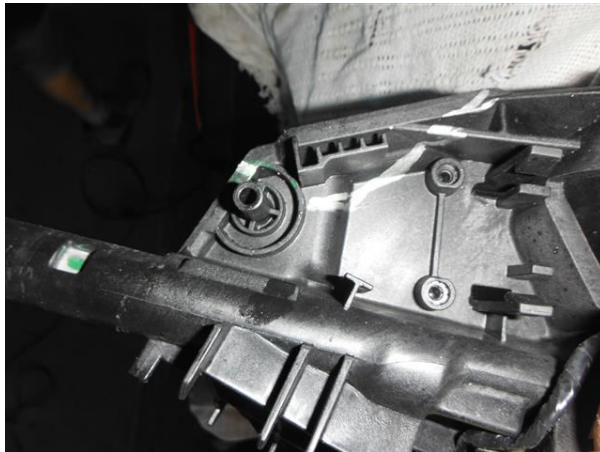
You can now fit the new bolt to the extended steering arm **NOTE put some grease on the bolt do up tight NOW undo half a turn so it can spin and twist.**

Now drill a 8mm hole to gain cable through to the steering handlebars as per photo arrow in the corner ridge then feed it up through the handlebars as photo



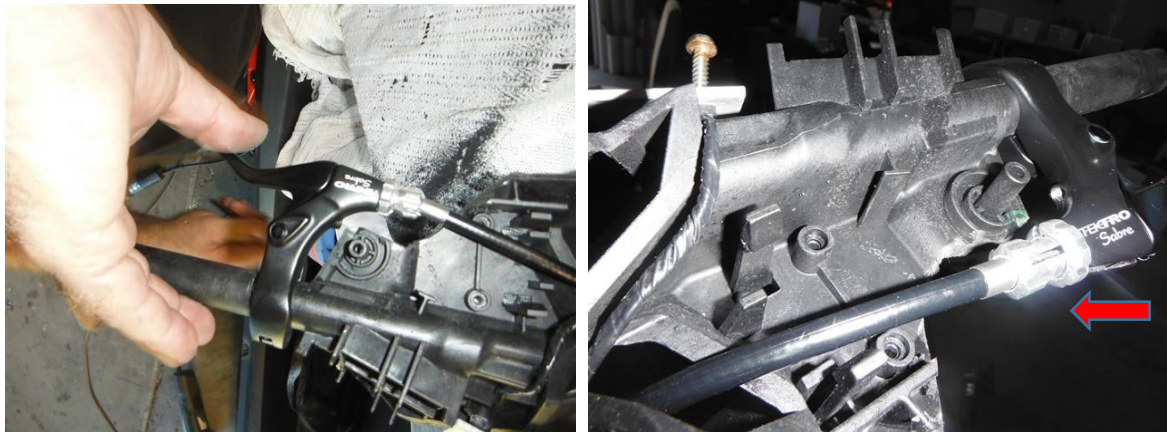
You need to cut out some clearance for cable and trigger assembly see photo below

Line marked in white line use a saw to cut out this area



Now install the trigger on the handlebars line up the cable and pre fit the ball joint unto the trigger assy

Remove the hand grip and install trigger as close as possible to the right and adjust the angle and tighten up the trigger 5mm allen bolt refit your hand grip depending on your type you may need to trim some off the end to fit back on.



Use adjusting nut to take any slack out of cable.

Congratulations you're now done just refit any of plastics covers to ski.

Check you have easy turning of handlebars and the trigger is free moving NOTE you can drop some oil down the cable for a bit of lube.